

Woman's Day® Specials

# Remodeling & Makeovers™

ENTER FOR  
A CHANCE TO

**win**  
**\$25,000**  
**IN CASH**  
See p. 90

*best colors  
for every  
room*

*152 new products  
and sources*

**322**

**LITTLE CHANGES  
THAT HAVE  
BIG IMPACT**

Woman's Day  
Remodeling & Makeovers  
Volume XXI, Number 2  
U.S. \$4.99  
Display until December 26, 2011  
womansday.com/specials

03940





## real redos

ALL ABOUT THE HOUSE  
location  
LANSDOWNE, PA  
built  
1900  
house style  
VICTORIAN  
8,000 SQ. FT.  
5 BEDROOMS  
4.5 BATHS

# going full circle

A family treasure is reborn for the next generation

WRITTEN BY MEGAN FULWEILER  
PHOTOGRAPHS BY GARDNER/FOX

**B**y luck, Frank Mustin, grandson of Frank Fleer, the developer of Chiclets, reclaimed his grandfather's circa-1900 Lansdowne, Pennsylvania, house. He enlisted his granddaughter, Phoebe Titus, her husband David and their two young daughters to live in the house as family custodians. But the house needed an overhaul, so Mustin hired Gardner/Fox, a Bryn Mawr, Pennsylvania, construction firm to do the work. To the kitchen, they added a large breakfast area and tons of storage, improvements Phoebe's great-grandfather would have relished.



**RIGHTING THE PAST**  
Dated orange Formica countertops, inefficient appliances and dim light didn't suit an active family.



**CREATE CHARM**  
The beat-up floor was replaced with red oak hardwood stained to match the home's original chestnut woodwork.

**BOOST LIGHTING**  
Pendants with a colonial revival slant (\$222; [rejuvenation.com](http://rejuvenation.com)) work well in the historic house.

**EASE CHORES**  
A multifunctional faucet (\$629.30; [rohlhome.com](http://rohlhome.com)) stationed at the main sink eases cleanup.

**THINK FUNCTION**  
The Brazilian soapstone countertops ([buckscountysapstone.com](http://buckscountysapstone.com)) are durable and low-maintenance.

**GO BIG**  
Cooking for a large weekend crowd of family and friends is easy with this Wolf range (\$3,341.46; [ferguson.com](http://ferguson.com)).

**FOCUS ON DETAILS**  
The 2" x 6" Noccola tile backsplash (\$11.27/sq. ft.; [gravenatile.com](http://gravenatile.com)) echoes the period feel of the room.

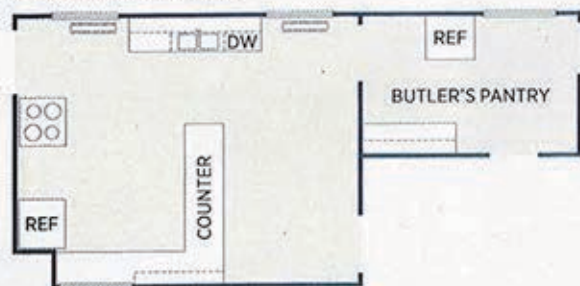




**ADD A SECOND SINK**  
The butler's pantry features a Kohler farmhouse sink (kohler.com) and a Rohl faucet set in the same Brazilian soapstone countertop as in the rest of the kitchen.

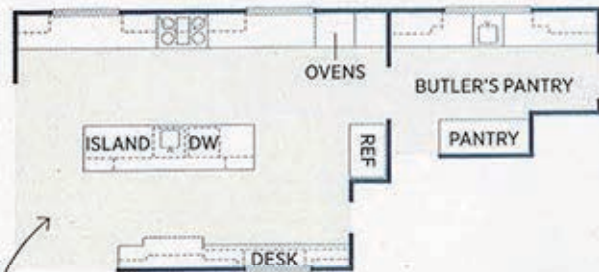
#### before

The old kitchen had an uncomfortable layout, limited prep room and little storage.



#### after

The new kitchen has a large island, a reconfigured pantry and a roomy breakfast nook.



Opening a wall brought in a flood of natural light.

The old house needed an updated kitchen in tune with its historic roots.



**BUILD IN CONTRASTS**  
To prevent the galley from appearing dark, the couple mixed driftwood-stained alder and oak cabinets (Adelphi Kitchens & Cabinetry; adelphikitchens.com) with help from Adelphi's design specialist Nadia Waltz, C.I.D.

FLOOR PLANS:  
STEVE STANKIEWICZ

#### CLAIM EVERY INCH

The oak island includes a sink, pull-out baskets for produce, storage for bowls and flatware, and a Bosch dishwasher (bosch-home.com). The built-in desk is another bonus. "It lets me run to my computer while I'm cooking," says Phoebe, who works at home.

